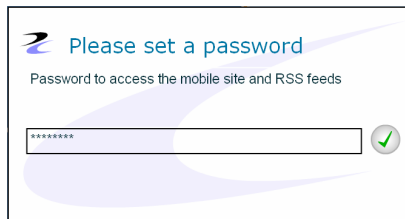


About SendR

SendR is an application which can be installed to a mobile device and will enable you to browse your device's file directory and upload files to your REfLECT asset store.

Authorisation

To access SendR from your mobile phone, you will need to access your account from a computer first.



This screen will pop-up when you first log in to REfLECT Online. Creating a password here will enable you to use SendR. This can be the same as your IfL password. Normally we would recommend a 'strong' password but as it can be very difficult typing mixed case passwords

on some devices you might consider choosing a longer, single-case password*.

If you have previously set a password but can't remember it, you can access it through the **tools > settings** menu in REfLECT. Click on the key/tools icon in the bottom toolbar.



This will open the password page where you can change the 'second' password.

Please note: The mobile password will not work unless you login to your main REfLECT account at least once every 45 days.

* The reason you need to create a separate password is that you normally access REfLECT through the IfL members pages. When you access REfLECT from these pages it is automatic (a process called single sign-on) and your password is never stored. Because you access REfLECT directly from a mobile device it is necessary to create a password within REfLECT so that the system knows it is really you trying to access your assets.

more...

01

02

03

04

05

06

Installing SendR

To install SendR, navigate your mobile net browser to:

<http://www.pebblepad.co.uk/reflect/sendr.jad>

You can also access the same file from this shorter URL ***<http://tinyurl.com/mq4mze>***

This will download a relatively small file which describes the application to your mobile device. SendR will be downloaded and installed. This step is important to ensure that you receive only trusted software from Pebble Learning.

If you have any issues with installing SendR, please refer to 'supported devices' at the end of this document.

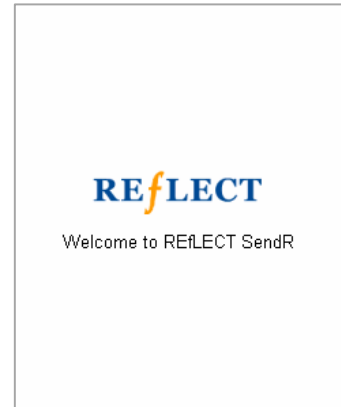
more...

01 02 03 04 05 06

Using SendR

Once installed SendR can be launched from either the application folder or Java folder depending on your device.

While you see the welcome screen, SendR is looking for previously entered details to save you time. This will not take long.

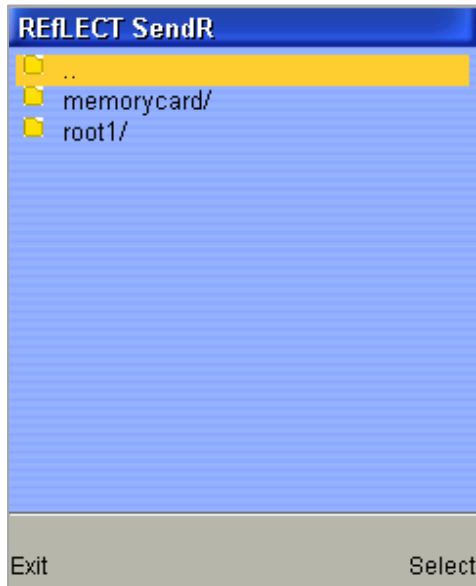
A screenshot of the REFLECT SendR application interface. The title bar reads "REFLECT SendR". The main text says: "This application will enable you to browse your phone and upload files to your REFLECT account, please enter your username and password into the fields below :". There are two input fields: "Username :" with the value "c0364910" and "Password :" with "*****". Below these is a section "Or manually enter the address :" with a text box containing "http://reflect.ifl.ac.uk/". At the bottom, there are two buttons: "Exit" and "Login".

If this is the first time you have used SendR on this device, please enter your IfL username (your member number) and your mobile password. The user details are not validated until you upload the first file, if these are incorrect you will have the option to re-enter them. However, once they are entered, and correct, SendR will retain them so you don't have to re-enter them again (*not all phones support this*).

Select 'Login' to continue.

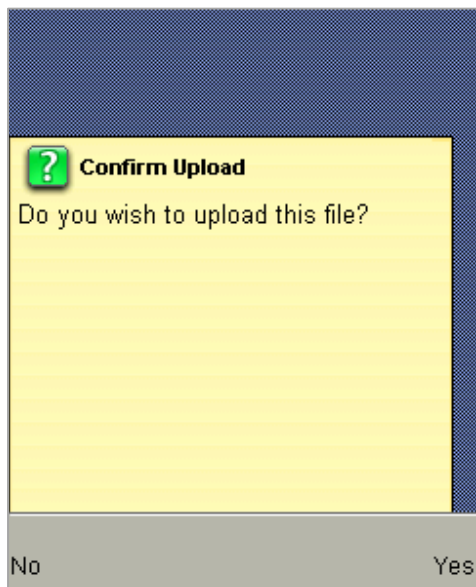
TIP! Your main upload address will be REFLECT, so this has been entered for you. However, if you also have a PebblePad account you can enter its URL here and use SendR to upload files to that account as well.

more...



Once you have entered the user details and logged in you will be able to browse your devices files.

Please Note: Selecting 'Exit' will close SendR.

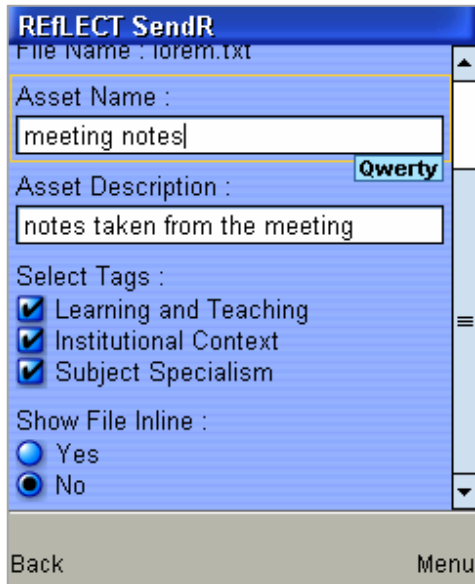


Navigate through your files and select a file you wish to upload. You will need to confirm you wish to upload the file.



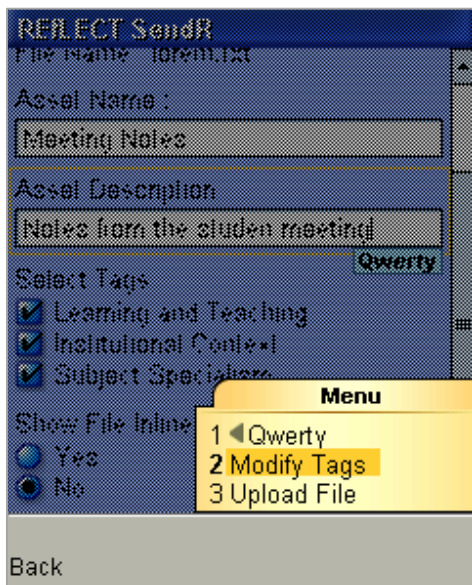
more...

01 02 03 04 05 06



After confirming the file upload, you can name your asset, give it a description, tag it and if it is a txt, htm or html file, you can choose to display it inline.

This means that when you choose to view the asset within REfLECT, you can see the file immediately rather than having to download or view it from the 'asset holder' as you would with most uploaded files.



You can modify the default tags or create your own. To do this, select 'Modify Tags'.

TIP! Only the selected tags will be used when tagging an asset. Any tags created but not selected will remain in the list, for future use.

more...

01

02

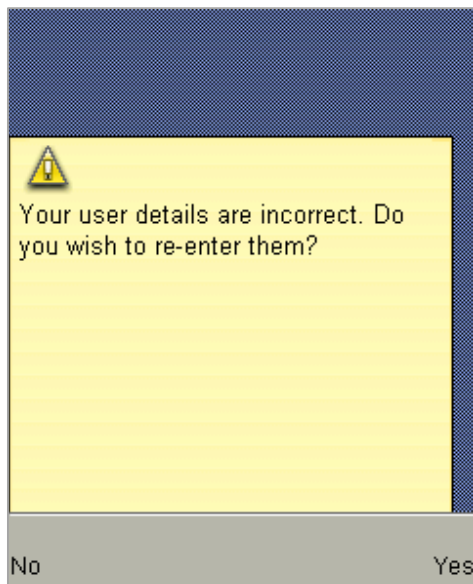
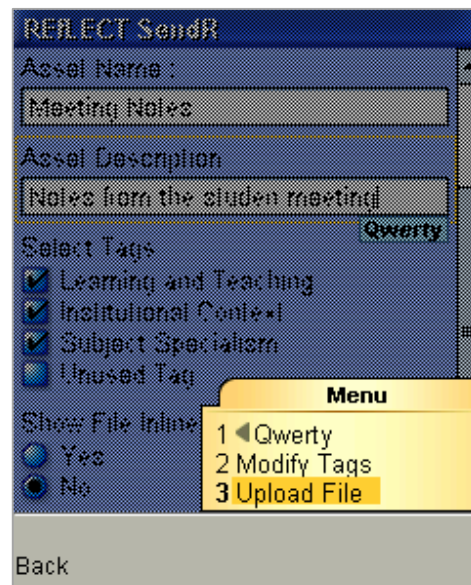
03

04

05

06

Select 'Upload File' to start the upload.



Please Note: If your user details cannot be verified you may see the following screen. Click yes to re-enter them.

more...

01

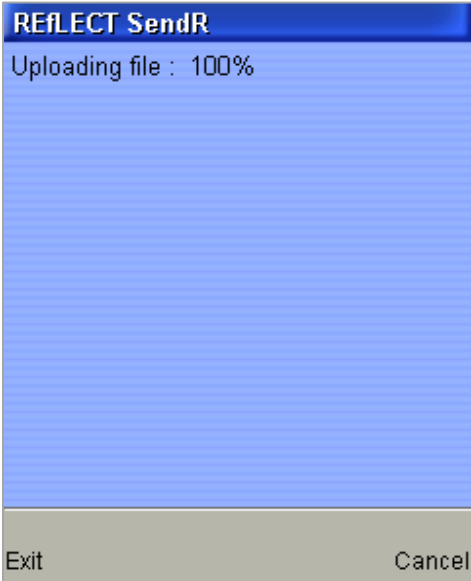
02

03

04

05

06



You will see the upload progress here. It is normal for the process to take longer than uploading from a PC.

Some devices may be slower uploading large files on slow data transfer networks.

more...

01

02

03

04

05

06

Supported Devices

The SendR application requires the following specifications on your mobile device:

- MIDP 2.0 or greater
- JSR-75 PDA Optional Packages
- Internet Connection (Such has WAP / WIFI)

If you are unsure of your device's specification then consult the manufacturer.

DIGITAL SECURITY

In order to ensure that you are using authentic software developed by Pebble Learning, SendR has been digitally signed using VeriSign. For more information about VeriSign visit <http://www.verisign.co.uk>

Your mobile device must support the following security certificate:

- VeriSign Class 3 Public Primary

If your mobile device does not support this certificate then SendR may still install but it is possible that it may not work properly.

TIP! You can consult your user documentation to verify which certificates your device supports.